

AMERICA'S FIRST NAME IN FIREARMS COLT® SINCE 1836



With this  
wood carving  
in 1830-31,  
Sam Colt  
invented  
repeating  
firearms.



SPRING/SUMMER '97





Roy Rogers

urther, Colt forever altered history in 1836 when using his patented revolving cylinder design, he successfully produced the world's first commercial repeating firearms. He also forever established Colt® as America's First Name In Firearms.



Wild Bill Hickok

To try to summarize the contributions Sam Colt and his resulting companies have made to the firearms industry would be useless. Literally volumes have been required to record it all. Percussion black powder classics such as the Walker and Dragoon Models, 1860 Army and 1861 Navy. The most famous revolver ever, the 1873 Single Action Army ( or Peacemaker ) which signaled Colt's move into the metallic-cartridge era. The Model 1911 Automatic Pistol that still defines the standard for modern day .45 semiautomatic pistols. The Python, often referred to as the Rolls Royce of double action revolvers. The AR-15 and M16 class of rifles and carbines that define the standard for military small-arms weapons in over 40 countries around the world.

Suffice it to say that no other name has contributed more to the legendary history, or the future ingenuity of American firearms than Colt. And that's what makes Colt the most revered and collectible name in the history of firearms to this very day, and for the future.



General George S. Patton

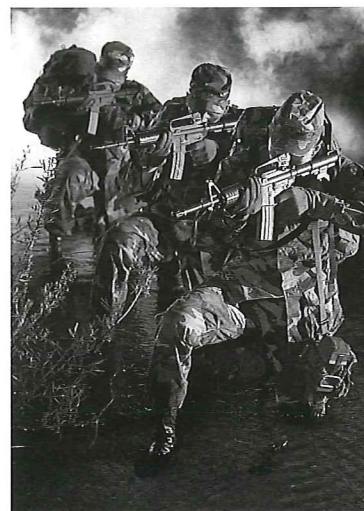




To help better define the versatility of Colt, this catalog has divided current Colt commercial firearms into five product categories based

on primary use: Personal Protection/Law Enforcement; Sport Shooting; Precision Products; Custom Products and Services; and Western Products. — Of course, every model can be used for more than one purpose at the discretion of the shooter. — You will also see Colt's new models for 1997, as well as read about the new Colt Lifetime Service Agreement, an extension of our commitment to product quality and excellence.

Enjoy acquainting yourself with the line of quality Colt firearms. — It includes models designed to fit shooting needs from the first-time owner to the most experienced competitive shooter or law enforcement officer. — If the opportunity presents itself, introduce yourself to Team Colt Shooters, two of the world's top competitive shooters, and Team Colt Rodeo, five Professional Rodeo Cowboys Association members competing at the National Finals level. — And thank you for buying Colt. America's First Name In Firearms Since 1836.



AMERICA'S FIRST NAME IN FIREARMS **COLT** SINCE 1836

# INDEX

★ New For 1997 ★ Modified 1997 Models

## PERSONAL PROTECTION/ LAW ENFORCEMENT

★ DS-II™ .38 Special Revolver .....	4
★ Colt® Pony™ .380 Auto Pistol .....	5
★ King Cobra® .357 Mag Revolver .....	6
★ M1991A1™ .45 ACP Pistol .....	7
★ M1991A1™ Stainless .....	8
Lightweight Carry Models .....	9

## SPORT SHOOTING

★ Anaconda™ .44 Mag Revolver .....	10
★ King Cobra .357 Mag Revolver .....	12
Match Target Rifle .....	14
★ Colt Accurized Rifle .223 Rem. ....	15
Colt .22 .....	16
★ Government® Model 9x23mm Pistol...	17
★ Combat Target .45 ACP Pistol .....	17

## PRECISION PRODUCTS

★ Python® Elite .357 Mag Revolver .....	18
★ Colt Gold Cup® Trophy .45 ACP Pistol...	19
★ Special Tactical .45 ACP Pistol .....	19

## CUSTOM PRODUCTS & SERVICES

Design Your Own Gun .....	20
★ "Bright" Stainless Finish .....	20
★ Old World Engraver Sampler S.A.A. ....	21

## WESTERN PRODUCTS

The Peacemaker .....	22
★ Team Colt Rodeo .....	23
★ "The Legend" Limited Edition National Final Rodeo Commemorative .....	23

## COLT® LICENSED PRODUCTS

Colt® Optics .....	24
Colt® Black Powder .....	26
Colt® Safes .....	26

## FIRST-TIME BUYERS' GUIDE & GLOSSARY

## LIFETIME SERVICE AGREEMENT

★ .....	Back Cover
---------	------------



**DS-II®****.38 SPECIAL****THE BEST COLT  
SNUBNOSE YET**

Sam Colt's Baby Paterson of 1837 showed that snubnose pocket revolvers were on his mind from the very beginning. The Trapper's Model, a variant of the 1862 Police, was a percussion forerunner of the Detective Special. But it wasn't until 15 years after Colt's death that the company he founded offered the double-action Lightning Model of 1877. Subsequent modifications led to numerous models and calibers over the years. But none were more famous than the Colt .38 Detective Special® introduced in 1927, and now available as the 4th generation DS-II. Featuring Colt's standard 6-shot capacity, the DS-II is designed by experience. It combines internal mechanism and lockwork modifications, transfer bar safety mechanism, and rugged, stainless steel small frame for the smoothest performing, shooter-friendly Detective Special model ever.

**NEW  
FOR  
'97**

MODEL	SD1020 <b>NEW!</b>
NAME	DS-II
MATERIAL	Stainless Steel
FINISH	Stainless Steel
ACTION	Single/Double
CALIBER	.38 Spec
CAPACITY	6 Rounds
BARREL LENGTH	2"
HAMMER	Service
TRIGGER	Smooth Combat
FRONT SIGHT	Ramp
REAR SIGHT	Fixed
SIGHT RADIUS	4"
GRIPS	Rubber, Combat Style
WEIGHT	21 oz.
OVERALL LENGTH	7"







MODEL NAME	DS6090 <b>NEW!</b> Pony	DS6891 <b>NEW!</b> Pony Pocketlite L.W.	O6891 Mustang Pocketlite L.W.
MATERIAL	Stainless Steel	Aluminum and Stainless Steel	Aluminum and Stainless Steel
FINISH	Teflon and Stainless Steel	Teflon and Stainless Steel	Teflon and Stainless Steel
ACTION	Double Only (DA)	Double Only (DA)	Single
CALIBER	.380 Auto	.380 Auto	.380 Auto
CAPACITY	6+1 Rounds	6+1 Rounds	6 Rounds
BARREL LENGTH	2-3/4"	2-3/4"	2-3/4"
HAMMER	Bobbed	Bobbed	Combat Type
TRIGGER	Smooth Combat	Smooth Combat	Serrated
FRONT SIGHT	Ramp	Ramp	Ramp
REAR SIGHT	Fixed	Fixed	Fixed
SIGHT RADIUS	3-3/4"	3-3/4"	3-3/4"
GRIPS	Black Composition	Black Composition	Black Composition
WEIGHT	1.9 oz.	1.3 oz.	12-1/2 oz.
OVERALL LENGTH	5-1/2"	5-1/2"	5-1/2"
SAFETY	Firing Pin Safety Disconnect Safety	Firing Pin Safety Disconnect Safety	Firing Pin Safety Disconnect Safety
SPECIAL FEATURES	Recoil-Reducing Locked Breech No-Snag Slim Profile	Recoil-Reducing Locked Breech No-Snag Slim Profile	Recoil-Reducing Locked Breech No-Snag Slim Profile

## SMALL FRAME SEMI-AUTOS

.380 AUTO

PONY® AND PONY  
POCKETLITE L.W.

**NEW  
FOR  
'97**

The first Colt .380 caliber "Pocket Automatic" was the Model 1908. Intervening models over the years offered additional refinements of this popular small gun concept. Now, backed by 98 years of experience, Colt's offers the ultimate in simple-to-operate personal protection/law enforcement "pocket pistols". The Ponys' double-action feature minimizes response time with "point-and-shoot" simplicity, combined with all the concealed carry advantages offered by a slim-profile, compact, ultra-lightweight pistol. This is especially important for less experienced shooters, and law enforcement personnel in pressure situations. Shooters more concerned with quick return to point of aim for second-shot accuracy and performance may prefer the single action Mustang model. Double or single action, many women find the compact size easy and comfortable to handle. All Colt .380 small-frame pistols feature exclusive low-recoil locked breech, and both firing pin and disconnect safeties.



# KING COBRA

.357 MAGNUM/.38 SPECIAL

P E R S O N A L P R O T E C T I O N

Colt marketed the first swingout cylinder double action in 1889 – the New Model Navy. A stream of “New” swingout-cylinder models followed, introducing such major revolver improvements as outside locking slots on the cylinder, clockwise cylinder revolution and Positive Lock hammer block safety. Then in 1987, Colt introduced the King Cobra®, incorporating 96 years of experience into a mid-frame revolver to answer the needs of security and light law enforcement. This extremely strong .357 mag offers improved sighting and balance with minimized recoil and barrel flip. And the short hammer arc gives quick lock time for faster accurate shooting. As a new feature for 1997, all King Cobra models will come drilled and tapped for easy mounting of Colt Optics.



MODEL	AA3040EDT	AA3060EDT
NAME	King Cobra	King Cobra
MATERIAL	Stainless Steel	Stainless Steel
FINISH	Stainless Steel	Stainless Steel
ACTION	Single/Double	Single/Double
CALIBER	.357 Magnum	.357 Magnum
CAPACITY	6 Rounds	6 Rounds
BARREL LENGTH	4"	6"
HAMMER	Target	Target
TRIGGER	Serrated Target	Serrated Target
FRONT SIGHT	Red Ramp	Red Ramp
REAR SIGHT	White Outline	White Outline
	Adjustable	Adjustable
SIGHT RADIUS	5-1/2"	7-1/2"
GRIPS	Rubber, Combat Style	Rubber, Combat Style
WEIGHT	42 oz.	46 oz.
OVERALL LENGTH	9"	11"
SPECIAL FEATURES	NEW! Optional Porting NEW! Drilled & Tapped for Colt Optics Scope Mounts (Available in 2nd quarter)	NEW! Optional Porting NEW! Drilled & Tapped for Colt Optics Scope Mounts (Available in 2nd quarter)





MODEL	01991U	04691U	09091U
NAME	M1991A1	M1991A1 Commander	M1991A1 Compact
MATERIAL	Carbon Steel	Carbon Steel	Carbon Steel
FINISH	Matte Blue	Matte Blue	Matte Blue
ACTION	Single	Single	Single
CALIBER	.45 ACP	.45 ACP	.45 ACP
CAPACITY	7 Rounds	7 Rounds	6 Rounds
BARREL LENGTH	5"	4-1/4"	3-1/2"
HAMMER	Service	Combat Style	Combat Style
TRIGGER	Smooth	Smooth	Smooth
FRONT SIGHT	NEW! Fixed, White Dot	NEW! Fixed, White Dot	NEW! Fixed, White Dot
REAR SIGHT	NEW! Fixed, White Two Dot	NEW! Fixed, White Two Dot	NEW! Fixed, White Two Dot
SIGHT RADIUS	6-1/2"	5-3/4"	5-1/4"
GRIPS	Checkered Rubber Composite Stocks	Checkered Rubber Composite Stocks	Checkered Rubber Composite Stocks
WEIGHT	38 oz.	36 oz.	34 oz.
OVERALL LENGTH	8-1/2"	7-3/4"	7-1/4"
SAFETY	Firing Pin Safety Grip Safety Manual Safety Disconnect Safety	Firing Pin Safety Grip Safety Manual Safety Disconnect Safety	Firing Pin Safety Grip Safety Manual Safety Disconnect Safety

M1991A1™

.45 ACP

## COLT® AUTOMATIC PISTOLS

The Model 1911 is one of Colt's major contributions to the development of firearms. It was selected as the new (U.S. Military) Service sidearm in a head-to-head competition. In its report, the selection board found the Colt superior, more reliable, more durable, more easily disassembled, less fatiguing and more accurate. Both World Wars, Korea and Vietnam earned it its place in American military history. Its basic design still stands as the standard by which all others are manufactured and judged. The M1991A1 and M1991A1 Stainless are direct 3rd and 4th generation descendants of the "often imitated but never duplicated" Colt M1911 classic automatic pistol.



# M1991A1 STAINLESS

.45 ACP

While the Model 1911 became the classic .45, it was not Colt's first model. As the first U.S. manufacturer of automatic pistols, Colt's introduced the Model 1900 based on patents awarded to John M. Browning and C.J. Ehbett. "Automatic" never was intended to mean that squeezing the trigger once and holding it would fire all the rounds in the magazine. The term was applied to handguns with the cartridges held in the grip frame, which after a live round is charged in the chamber will fire and reload each time the trigger is pulled.

P E R S O N A L P R O T E C T I O N



NEW  
FOR  
'97

MODEL NAME	01091U M1991A1 Stainless	04091U <b>NEW!</b> M1991A1 Stainless Commander	09191U <b>NEW!</b> M1991A1 Stainless Compact
MATERIAL	Stainless Steel	Stainless Steel	Stainless Steel
FINISH	Matte Stainless Steel	Matte Stainless Steel	Matte Stainless Steel
ACTION	Single	Single	Single
CALIBER	.45 ACP	.45 ACP	.45 ACP
CAPACITY	7 Rounds	7 Rounds	6 Rounds
BARREL LENGTH	5"	4-1/4"	3-1/2"
HAMMER	Service	Combat Style	Combat Style
TRIGGER	Smooth	Smooth	Smooth
FRONT SIGHT	Fixed, White Dot	Fixed, White Dot	Fixed, White Dot
REAR SIGHT	Fixed, White Two Dot	Fixed, White Two Dot	Fixed, White Two Dot
SIGHT RADIUS	6-1/2"	5-3/4"	5-1/4"
GRIPS	Checkered Rubber Composite Stocks	Checkered Rubber Composite Stocks	Checkered Rubber Composite Stocks
WEIGHT	38 oz.	36 oz.	34 oz.
OVERALL LENGTH	8-1/2"	7-3/4"	7-1/4"
SAFETY	Firing Pin Safety Grip Safety Manual Safety Disconnect Safety	Firing Pin Safety Grip Safety Manual Safety Disconnect Safety	Firing Pin Safety Grip Safety Manual Safety Disconnect Safety

01091U-M1991A1 Stainless



## LIGHTWEIGHT CARRY MODELS

.45 ACP

Colt's first introduced the use of a lightweight aluminum alloy in a gun frame in 1950. Building on this experience, the Colt Commander and Officer's L.W. models now offer the power and performance of full-sized .45 ACP pistols, in compact, lightweight carry models. These models have had a direct impact on the resurgence in the popularity of using .45 semiautomatics in law enforcement.



09840E - Officer's ACP L.W.

MODEL	04840E	09840E
NAME	Commander L.W.	Officer's ACP L.W.
MATERIAL	Carbon Steel and Aluminum	Carbon Steel and Aluminum
FINISH	Blue	Matte Blue
ACTION	Single	Single
CALIBER	.45 ACP	.45 ACP
CAPACITY	8 Rounds	6 Rounds
BARREL LENGTH	4-1/4"	3-1/2"
HAMMER	Combat Style	Combat Style
TRIGGER	Smooth	Smooth
FRONT SIGHT	Fixed, White Dot	Fixed, White Dot
REAR SIGHT	Fixed, White Two Dot	Fixed, White Two Dot
SIGHT RADIUS	5-3/4"	5-1/4"
GRIPS	Checkered Rubber Composite Stocks	Checkered Rubber Composite Stocks
WEIGHT	27-1/2 oz.	24 oz.
OVERALL LENGTH	7-3/4"	7-1/4"
SAFETY	Firing Pin Safety Grip Safety Manual Safety Disconnect Safety	Firing Pin Safety Grip Safety Manual Safety Disconnect Safety
SPECIAL FEATURES	2 Magazines	2 Magazines





# ANACONDA®

.44 MAGNUM/.44 SPECIAL  
OR .45 COLT

In the days of Sam Colt and the westward migration of settlers, it was difficult to differentiate between sport shooting, and shooting to provide the essentials of life. Today, shooting can truly be enjoyed as a sport. And sport shooters can choose the best gun to match their requirements from a complete line of high performance, top quality Colt models. Maybe a .44 mag Anaconda, the world's most powerful handgun. Or the .357 mag King Cobra, one of the strongest mid-frame revolvers around. Or a variety of "O" model pistols in .45, .38 and 9x23mm calibers with feature variations to satisfy most shooters' preferences right out of the box. Or two .22 caliber pistols that are second to none in performance. Or a line of .223 caliber sporting rifles that inherited their performance and durability from the world renowned line of Colt AR-15 and M16 military and law enforcement firearms.

S P O R T S H O O T I N G



<b>MODEL</b>	MM3040DT	MM3060DT	MM3080PDT	MM4560DT
<b>NAME</b>	Anaconda	Anaconda	Anaconda	Anaconda
<b>MATERIAL</b>	Stainless Steel	Stainless Steel	Stainless Steel	Stainless Steel
<b>FINISH</b>	Stainless Steel	Stainless Steel	Stainless Steel	Stainless Steel
<b>ACTION</b>	Single/Double	Single/Double	Single/Double	Single/Double
<b>CALIBER</b>	.44 Magnum	.44 Magnum	.44 Magnum	.45 Colt
<b>CAPACITY</b>	6 Rounds	6 Rounds	6 Rounds	6 Rounds
<b>BARREL LENGTH</b>	4"	6"	8"	6"
<b>HAMMER</b>	Target	Target	Target	Target
<b>TRIGGER</b>	Serrated, Target	Serrated, Target	Serrated, Target	Serrated, Target
<b>FRONT SIGHT</b>	Red Ramp	Red Ramp	Red Ramp	Red Ramp
<b>REAR SIGHT</b>	White Outline	White Outline	White Outline	White Outline
	Adjustable	Adjustable	Adjustable	Adjustable
<b>SIGHT RADIUS</b>	5-3/4"	7-3/4"	9-3/4"	7-3/4"
<b>GRIPS</b>	Rubber Combat Style	Rubber Combat Style	Rubber Combat Type	Rubber Combat Style
<b>WEIGHT</b>	47 oz.	53 oz.	59 oz.	53 oz.
<b>OVERALL LENGTH</b>	9-5/8"	11-5/8"	13-5/8"	11-5/8"
<b>SPECIAL FEATURES</b>	NEW! Optional Porting NEW! Drilled & Tapped for Colt Optics Scope Mounts (Available in 2nd quarter)	NEW! Optional Porting NEW! Drilled & Tapped for Colt Optics Scope Mounts (Available in 2nd quarter)	NEW! Ported NEW! Drilled & Tapped for Colt Optics Scope Mounts (Available in 2nd quarter)	NEW! Optional Porting NEW! Drilled & Tapped for Colt Optics Scope Mounts (Available in 2nd quarter)



S P R T C S H O O T I N G



Optional scope available through Colt Optical.



AMERICA'S FIRST NAME IN FIREARMS SINCE 1836

## NEW '97 FEATURE

All models drilled and tapped. This new ported 8" model is shown with optional Colt Optics Scope and Mount. Available through Colt Optical.

P A I I G E



# KING COBRA®

.357 MAGNUM/.38 SPECIAL

## S P O R T S H O O T I N G



### NEW '97 FEATURE

All models drilled and tapped for easy mounting of optional Colt Optics. Available through Colt Optical.

MODEL	AA3040EDT	AA3060EDT
NAME	King Cobra	King Cobra
MATERIAL	Stainless Steel	Stainless Steel
FINISH	Stainless Steel	Stainless Steel
ACTION	Single/Double	Single/Double
CALIBER	.357 Magnum	.357 Magnum
CAPACITY	6 Rounds	6 Rounds
BARREL LENGTH	4"	6"
HAMMER	Target	Target
TRIGGER	Serrated Target	Serrated Target
FRONT SIGHT	Red Ramp	Red Ramp
REAR SIGHT	White Outline	White Outline
	Adjustable	Adjustable
SIGHT RADIUS	5-1/2"	7-1/2"
GRIPS	Rubber, Combat Style	Rubber, Combat Style
WEIGHT	42 oz.	46 oz.
OVERALL LENGTH	9"	11"
SPECIAL FEATURES	NEW! Optional Porting NEW! Drilled & Tapped for Colt Optics Scope Mounts (Available in 2nd quarter)	NEW! Optional Porting NEW! Drilled & Tapped for Colt Optics Scope Mounts (Available in 2nd quarter)



S P O R T S H O O T I N G

## COMPETITIVE SHOOTING

More and more shooters are participating in the sport of competitive shooting. Colt's is proud of our history as a leader in this arena. In addition



to sponsoring the Team Colt Shooters, two of the world's top competitive shooters, Colt's is also an active sponsor in many competitions. This includes regional and national events for IPSC, SASS and other national shooting organizations. Colt's is also proud of our leadership role in promoting responsible and safe use of firearms through education and training. Be sure to check with your Colt firearms dealer for the schedule of competitive shooting events in your area.

AMERICA'S FIRST NAME IN FIREARMS  SINCE 1836

P A G E  
13



# MATCH TARGET® RIFLES

.223 REMINGTON

While the Colt name is virtually synonymous with handguns, Sam Colt's initial revolvers off the assembly line were the longarms. That's right. The first production model of any Colt was the No. 1 Ring Lever Rifle. The carbine breech (attachable shoulder stocks for handguns) and America's first slide action rifle were also part of Colt's on-and-off ventures into longarms. Then in 1963 the AR-15 and M16 .223 automatic rifles "made Colt's the small-arms sensation of modern warfare". Their unmatched accuracy, performance and durability are available in their direct descendant, the Colt semiautomatic-only, sporting rifles. They're ideal for hunting and competition shooting.

S P O R T S H O O T I N G



<b>MODEL NAME</b>	MT6530 Match Target Lt. Wt.	MT6551 Match Target	MT6601 Match Target HBAR	MT6700 Match Target Competition HBAR	MT6731 Match Target Competition HBAR II
<b>FINISH</b>	Matte Black	Matte Black	Matte Black	Matte Black	Matte Black
<b>ACTION</b>	Semi Auto. Gas Operated. Locking Bolt	Semi Auto. Gas Operated. Locking Bolt	Semi Auto. Gas Operated. Locking Bolt	Semi Auto. Gas Operated. Locking Bolt	Semi Auto. Gas Operated. Locking Bolt
<b>CALIBER</b>	.223 Rem	.223 Rem	.223 Rem	.223 Rem	.223 Rem
<b>CAPACITY</b>	8 Rounds	8 Rounds	8 Rounds	8 Rounds	8 Rounds
<b>BARREL LENGTH</b>	16"	20"	20" HEAVY	20" HEAVY	16" HEAVY
<b>RIFLING TWIST</b>	RH, 1 Turn In 7"	RH, 1 Turn In 7"	RH, 1 Turn In 7"	RH, 1 Turn In 9"	RH, 1 Turn In 9"
<b>RIFLING GROOVES</b>	6	6	6	6	6
<b>TRIGGER</b>	Smooth	Smooth	Smooth	Smooth	Smooth
<b>FRONT SIGHT</b>	Adjustable Post for Elevation	Adjustable Post for Elevation	Adjustable Post for Elevation	Adjustable Post for Elevation	Adjustable Post for Elevation
<b>REAR SIGHT</b>	Adjustable	Adjustable	Adjustable	Adjustable	Adjustable
<b>SIGHT RADIUS</b>	14-3/4"	20"	20"	20"	14-3/4"
<b>WEIGHT</b>	6.7 Lbs.	7.5 Lbs.	8.0 Lbs.	8.5 Lbs.	7.1 Lbs.
<b>OVERALL LENGTH</b>	34-1/2"	39"	39"	39"	34-1/2"
<b>SPECIAL FEATURES</b>				Flattop receiver allows for low scope mounting	Flattop receiver allows for low scope mounting



# ACCURIZED RIFLE

.223 REMINGTON

**NEW  
FOR  
'97**

Match Target Rifle Conversion Kits allow you to change the caliber and/or barrel length of your Match Target Rifle by simply installing a new upper receiver and barrel assembly. The following kits are available:

MT6900DC	20" .223 HBAR
MT6700DC	20" .223 Flattop
	Upper Receiver
MT6850DC	16" 7.62x39mm
	Flattop Upper Receiver
MT6851DC	20" 7.62x39mm
	Flattop Upper Receiver

For additional Rifle and Handgun Accessories and Parts, please see Colt's Original Parts Catalog.

MODEL	CR6724 <b>NEW!</b>
NAME	Colt Accurized Rifle
FINISH	Matte Black w/Matte Stainless Steel Barrel
ACTION	Semi Auto, Gas Operated, Locking Bolt
CALIBER	.223 Rem
CAPACITY	8 Rounds
BARREL LENGTH	24" HEAVY
RIFLING TWIST	RH. 1 Turn In 9"
RIFLING GROOVES	6
TRIGGER	Smooth
WEIGHT	9.25 Lbs.
OVERALL LENGTH	43"
SPECIAL FEATURES	24" Stainless Steel Heavy Barrel Flattop receiver allows low scope mounting Scope Mount With 1" Rings

CR6724 - Colt Accurized Rifle



# COLT .22®

.22 LONG RIFLE

S P O R T S H O O T I N G

The first of the Colt series of .22 caliber pistols was introduced in 1915. While the name was not officially adopted until 1927, the entire series of .22s

through 1970 became commonly known by the legendary Woodsman name. Many consider the Woodsman series to be the finest .22's ever made. It's collectability still today attests to the Colt brand value. Today's Colt .22s live in the Woodsman tradition with performance and accuracy that will make the properly trained, first time shooter proud. Or the most experienced plinker, too, as far as that goes. They feature simplicity of design for easy maintenance, and are supplied with 2 magazines.

COLT TARGET MODEL  
— .22 LONG RIFLE —

Model shown with optional Colt Optics Railway Sight.  
Available through Colt Optical.

MODEL	CC5140	CC5260
NAME	Colt .22	Colt .22 Target
MATERIAL	Stainless Steel	Stainless Steel
FINISH	Stainless Steel	Stainless Steel
ACTION	Single	Single
CALIBER	.22 Long Rifle	.22 Long Rifle
CAPACITY	10 Rounds	10 Rounds
BARREL LENGTH	4-1/2"	6"
HAMMER	Striker Firing System	Striker Firing System
TRIGGER	Smooth	Smooth
FRONT SIGHT	Fixed	Partridge
REAR SIGHT	Fixed	White Outline Adjustable
SIGHT RADIUS	7-1/2"	9-1/4"
GRIPS	Composite Monogrip	Composite Monogrip
WEIGHT	33-1/2 oz.	40-1/2 oz.
OVERALL LENGTH	8-5/8"	10-1/8"
SAFETY	Manual Safety	Manual Safety
SPECIAL FEATURES		Integral Scope Mount

CC5260 - Colt .22 Target



## ENHANCED COMPETITION MODELS

.45 ACP, .38 SUPER OR 9 x 23MM

### NEW FOR '97

All Colt "O" model, full-frame semiautomatic .45, .38 and 9 x 23mm caliber pistols are enhanced versions of the classic Colt Model 1911.

You can choose from 5" Government and Combat Target models, 4-1/4" Commander models or 3-1/2" Officer's models. The new Government 9x23 is quickly becoming known for its performance as a high-capacity, M1911 type pistol in the new, hot 9x23 action competition. This full-sized, steel frame model makes the powerful 9x23 cartridge easy and pleasant to shoot. The Combat Target models are fine-tuned and accessorized to be competition ready out of the box.



MODEL	08020EU	08120E	01070E	04012E	09180E	02570E	01923E NEW
NAME	Combat Target	Combat Target	Govt Model	Combat Commander	Officer's ACP	Govt Model	Govt Model
MATERIAL	Stainless Steel	Carbon Steel	Stainless Steel	Stainless Steel	Stainless Steel	Carbon Steel	Carbon Steel
FINISH	Matte Stainless Steel	Matte Blue	Stainless Steel	Stainless Steel	Stainless Steel	Blue	Blue
ACTION	Single	Single	Single	Single	Single	Single	Single
CALIBER	.45 ACP	.45 ACP	.45 ACP	.45 ACP	.45 ACP	.38 Super	9 x 23mm
CAPACITY	8 Rounds	8 Rounds	8 Rounds	8 Rounds	6 Rounds	9 Rounds	9 Rounds
BARREL LENGTH	5"	5"	5"	4-1/4"	3-1/2"	5"	5"
HAMMER	Combat Style	Combat Style	Combat Style	Combat Style	Combat Type	Combat Style	Combat Style
TRIGGER	Skeletonized	Skeletonized	Smooth	Smooth	Smooth	Smooth	Smooth
FRONT SIGHT	Patridge	Patridge	Fixed, White Dot	Fixed, White Dot	Fixed, White Dot	Fixed, White Dot	Fixed, White Dot
REAR SIGHT	White Outline	White Outline	Fixed, White	Fixed, White	Fixed, White	Fixed, White	Fixed, White
SIGHT RADIUS	Adjustable	Adjustable	Two Dot	Two Dot	Two Dot	Two Dot	Two Dot
GRIPS	6-3/4"	6-3/4"	6-1/2"	5-3/4"	5-1/4"	6-1/2"	6-1/2"
WEIGHT	Wraparound	Wraparound	Wraparound	Wraparound	Wraparound	Wraparound	Wraparound
OVERALL LENGTH	Checked Rubber	Checked Rubber	Checked Rubber	Checked Rubber	Checked Rubber	Checked Rubber	Checked Rubber
SAFETY	Composite Stocks	Composite Stocks	Composite Stocks	Composite Stocks	Composite Stocks	Composite Stocks	Composite Stocks
SPECIAL FEATURES	39 oz.	39 oz.	38 oz.	36 oz.	34 oz.	39 oz.	39 oz.
	8-1/2"	8-1/2"	8-1/2"	7-3/4"	7-1/4"	8-1/2"	8-1/2"
	Firing Pin Safety	Firing Pin Safety	Firing Pin Safety	Firing Pin Safety	Firing Pin Safety	Firing Pin Safety	Firing Pin Safety
	Grip Safety	Grip Safety	Grip Safety	Grip Safety	Grip Safety	Grip Safety	Grip Safety
	Manual Safety	Manual Safety	Manual Safety	Manual Safety	Manual Safety	Manual Safety	Manual Safety
	Disconnect Safety	Disconnect Safety	Disconnect Safety	Disconnect Safety	Disconnect Safety	Disconnect Safety	Disconnect Safety
	2 Magazines	2 Magazines	2 Magazines	2 Magazines	2 Magazines	2 Magazines	2 Magazines



# PYTHON® ELITE

CUSTOM PRODUCTION MODEL  
.357 MAGNUM

P R E C I S I O N  P R O D U C T S



Introduced in 1955, the Python® was immediately recognized as a classic in design with its ventilated rib and shrouded barrel profile. The special finish and overall mechanical perfection were enthusiastically received by shooters, hunters, and law enforcement officials. The .357 magnum chambering was perfect for the revolver, and has never been changed. Today, the Python Elite remains as a classic among double action revolvers. World renown for speed and accuracy, the Python Elite is hand-honed for smooth action, and shipped with actual test target.

## NEW '97 FEATURE

Bright stainless finish available through Colt Custom Gun Shop

MODEL	I3040CS	I3060CS	I3640CS	I3660CS
NAME	Python Elite	Python Elite	Python Elite	Python Elite
MATERIAL	Stainless Steel	Stainless Steel	Carbon Steel	Carbon Steel
FINISH	Stainless Steel	Stainless Steel	Royal Blue	Royal Blue
ACTION	Single/Double	Single/Double	Single/Double	Single/Double
CALIBER	.357 Magnum	.357 Magnum	.357 Magnum	.357 Magnum
CAPACITY	6 Rounds	6 Rounds	6 Rounds	6 Rounds
BARREL LENGTH	4"	6"	4"	6"
HAMMER	Target	Target	Target	Target
TRIGGER	Serrated, Service	Serrated, Service	Serrated, Service	Serrated, Service
FRONT SIGHT	Red Ramp	Red Ramp	Red Ramp	Red Ramp
REAR SIGHT	White Outline Adjustable (Accro)	White Outline Adjustable (Accro)	White Outline Adjustable (Accro)	White Outline Adjustable (Accro)
SIGHT RADIUS	5-1/2"	7-1/2"	5-1/2"	7-1/2"
GRIPS	Rubber Service Style	Rubber Target Style	Rubber Service Style	Rubber Target Style
WEIGHT	38 oz.	43-1/2 oz.	38 oz.	43-1/2 oz.
OVERALL LENGTH	9-1/2"	11-1/2"	9-1/2"	11-1/2"



NOW, HAND CRAFTED BY MASTER GUNSMITHS IN THE COLT CUSTOM GUN SHOP



# COLT® GOLD CUP® TROPHY

CUSTOM PRODUCTION MODEL  
.45 ACP

NEW FOR '97

The first Colt Gold Cup was introduced in the late 1950's to give competitive shooters a gun to take directly from the dealer's shelf to the firing line. It featured an adjustable wide trigger, hand-honed action, adjustable target sights, flat grooved top rib on the slide, and many other refinements as standard. Today, the Colt Gold Cup Trophy is known as the finest shooting automatic in the world, and is the standard for competition guns. The Colt Gold Cup Trophy is accurized and shipped with actual target.

Other Colt Custom Precision Competition Pistols feature expert gunsmith accessorizing. These exceptional performance guns are ideal for the highest levels of competition, such as: steel plate matches; bowling pin events; and IPSC limited class competition.

MODEL NAME	05070CS Colt Gold Cup Trophy	05870CS Colt Gold Cup Trophy	01970CM Special Combat Govt - Competition	01970DB Colt Custom Competition	01991LCM Limited Class Government	01991TAC NEW! Special Tactical
MATERIAL	Stainless Steel	Carbon Steel	Carbon Steel	Carbon Steel	Carbon Steel	Carbon Steel
FINISH	Stainless Steel	Blue	Hard Chrome	Blue	Matte Blue	Matte Blue
ACTION	Single	Single	Single	Single	Single	Single
CALIBER	.45 ACP	.45 ACP	.45 ACP	.45 ACP	.45 ACP	.45 ACP
CAPACITY	7 & 8 Round Mag.	7 & 8 Round Mag.	8 Rounds	8 Rounds	7 Rounds	7 Rounds
BARREL LENGTH	5"	5"	5"	5"	5"	5"
HAMMER	Skeletonized	Skeletonized	Combat Skeletonized	Combat Skeletonized	Skeletonized	Service
TRIGGER	Skeletonized Aluminum with Adjustable Trigger Stop	Skeletonized Aluminum with Adjustable Trigger Stop	Skeletonized	Serrated	Skeletonized	Nylon with Overtravel Stop
FRONT SIGHT	Partridge	Partridge	Clark Front Sight	Dove Tail	Fixed	Novak
REAR SIGHT	Elliason Adjustable	Elliason Adjustable	Bomar Adjustable	Bomar Low Mount Adjustable	Fixed	Novak
SIGHT RADIUS	6-3/4"	6-3/4"	6-3/4"	6"	6-1/2"	6-1/2"
GRIPS	Wraparound Rubber Composite Stocks	Wraparound Rubber Composite Stocks	Checkered Rubber Composite Stocks	Double Diamond Rosewood without Medallions	Black Micarta Double Diamonds	Diamond Checkered
WEIGHT	39 oz.	39 oz.	39 oz.	40 oz.	38 oz.	38 oz.
OVERALL LENGTH	8-1/2"	8-1/2"	8-1/2"	8-1/2"	8-1/2"	8-1/2"
SAFETY	1,2,3,4	1,2,3,4	1,2,3,4	1,2,3,4	1,2,3,4	1,2,3,4
SPECIAL FEATURES	4	4	1, 5, 7, 10	1, 2, 5, 9, 10, 13	1, 6, 7	3, 14

**SAFETY** (1) Firing Pin Safety (2) Grip Safety (3) Manual Safety (4) Disconnect Safety  
**SPECIAL FEATURES** (1) Upswept Grip Safety (2) Bar-Stol Barrel Assembly (3) Ambidextrous Thumb Safety (4) Accurized and Shipped w/Target (5) 2-8 Round Magazines w/Base Pad (6) Serrated Mainspring Housing (7) Extended Ambidextrous Manual Safety (9) Compensator w/Front Sight (10) Steel Checkered Mainspring Housing w/Flared Magazine Well (11) Upsweep Grip Safety (12) Mainspring Housing w/Flared Magazine Well (13) Extended Magazine Release Button (14) Beavertail Palm Swell

AMERICA'S FIRST NAME IN FIREARMS **COLT** SINCE 1836



## CUSTOM COMPETITION GUNSMITHING

You create it. Colt will custom gunsmith it. From a simple custom feature to accurizing, fine tuning and total accessorizing to your specifications. Experienced Colt gunsmiths will make your ideal competition gun a reality.

### COMMISSIONED EDITIONS

Commemorate a special time or event for your fraternal, civic, military or law enforcement organization with an engraved and/or embellished special limited issue custom designed for the occasion. Commissioned editions have also created many successful fund raisers.

### FIRE BLUING

Meticulous finishing of small parts in a rich blue color to provide the perfect accent to your special gun.

### CUSTOM FINISHES

The finest finish available in a choice of matte blue, standard blue, Royal Blue, nickel, stainless, **NEW!** Ultimate "Bright" stainless, Coltguard, gold and silver plated.

# C U S T O M   G U N   S H O P   P

## COLT® HISTORICAL LETTER

Personally documents the authenticity of both older and contemporary Colt firearms. It insures a gun's characteristics are consistent with factory records and provides valuable information to enhance related activities such as collecting. This is not an appraisal, a service not provided by Colt. Research fee: \$60 or \$100, depending on gun type. The \$10 cost of the letter will be refunded if proper documentation cannot be found.



## DESIGN YOUR OWN COMPETITION GUN ACCURIZING • FINE TUNING • ACCESSORIZING

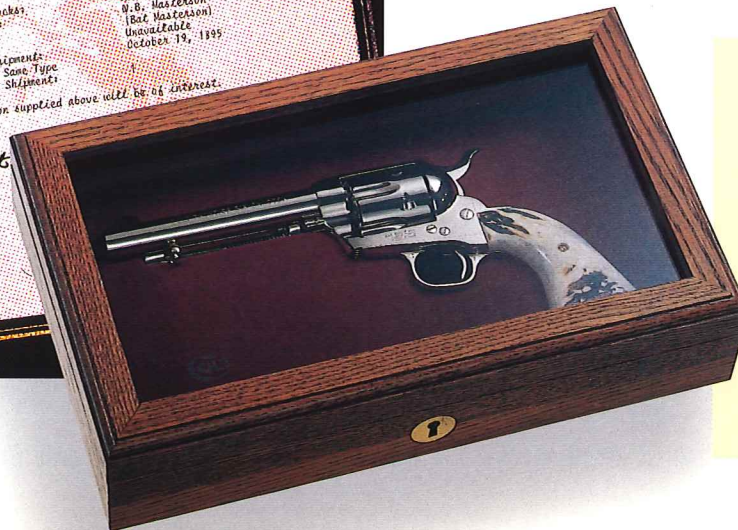


### SCRIMSHAW & CARVING

Personalize and beautify the grips of your gun with this age-old technique still practiced by Colt master engravers.

### CUSTOM CASES

The Colt Custom Gun Shop offers many styles of presentation cases.



## OTHER SERVICES

The ability of the Colt Custom Gun Shop to create your one-of-a-kind firearm is almost limitless. Write or call for an information packet and quotation on all the Custom Gun Shop services.



### HAND & CUSTOM ENGRAVING

From simple initials to intricate engraving and precious metal inlay embellishments. From one-of-a-kind heirlooms to limited edition commemoratives. There is virtually no limit as to what Colt master engravers can create. Also select from four journeyman American style engravings in:

- Grade A** 1/4 coverage
- Grade B** 1/2 coverage
- Grade C** 3/4 coverage
- Grade D** full coverage

Engraving is available for all popular finishes such as blue, nickel, color case, stainless steel, sterling silver, or gold

MODEL : P1856ES **NEW!**  
NAME : Old World Engravers Sampler

### OLD WORLD ENGRAVERS SAMPLER

This limited edition Single Action Army incorporates four of the most highly regarded styles of engraving from the pattern of world famous master engravers.

**NEW  
FOR  
'97**

Highlighting his unparalleled contribution to gunmaking, Sam Colt championed the unique tradition of embellishing and customizing firearms. His tradition in firearms excellence inspires the craftsmanship of the Colt Custom Gun Shop to this very day.

### HOW TO ORDER

To obtain a Colt Custom Gun Shop information package, write:  
Colt Customer Service Department, P.O. Box 1868, Hartford, CT 06144-1868 or call

(860) 244-1450 OR (800) 962-COLT



# THE PEACEMAKER

W E S T E R N P R O D U C T S  
F R O M T H E C O L T C U S T O M G U N S H O P

## COLT SINGLE ACTION ARMY

Introduced in 1873, no Colt revolver has earned greater fame than the Single Action Army—the Peacemaker. In design and performance, in line and form, no more sculptural and practical Colt has ever been created. Movies serve as constant reminders of the role this equalizer played in winning the West. Large numbers of knock-offs and look-alikes have never been able to replace the real Colt. Records on the S.A.A. are a Who's Who of action-oriented Americans of the late 19th and early 20th centuries. Among others, such names as Buffalo Bill Cody, Theodore Roosevelt, John Wesley Hardin, Judge Roy Bean, T. H. Berger, Pawnee Bill Lilly, Captain Jack Crawford, Wild Bill Hickok, Wyatt Earp, Pat Garrett, Billy the Kid, Sam Bass, the James, Younger and Dalton boys, and many others. Now in its 3rd generation, today's S.A.A. can list just as many equally famous owners.

MODEL	P1840	P1841	P1850	P1856
CALIBER	.45 Colt	.45 Colt	.45 Colt	.45 Colt
FINISH	Blue/Color Case	Nickel	Blue/Color Case	Nickel
BARREL LENGTH	4-3/4"	4-3/4"	5-1/2"	5-1/2"
WEIGHT	40 oz.	40 oz.	42 oz.	42 oz.
OVERALL LENGTH	10-1/4"	10-1/4"	11"	11"

MODEL	P1940	P1941	P1950	P1956
CALIBER	.44-.40	.44-.40	.44-.40	.44-.40
FINISH	Blue/Color Case	Nickel	Blue/Color Case	Nickel
BARREL LENGTH	4-3/4"	4-3/4"	5-1/2"	5-1/2"
WEIGHT	40 oz.	40 oz.	42 oz.	42 oz.
OVERALL LENGTH	10-1/4"	10-1/4"	11"	11"

Note: Colt will offer 7-1/2" barrel lengths on a special order basis.





## TEAM COLT RODEO

NEW  
FOR  
'97

Colt® has been a legendary part of the wild west since 1836. The tradition continues. Colt, an official PRCA sponsor, is proud to sponsor Team Colt, 5 PRCA cowboys, every one of which is a championship quality cowboy in his own right. It's a perfect fit. Championship quality cowboys. Legendary Colt quality.



## THE LEGEND

OFFICIAL GUN OF  
THE PRCA

NEW  
FOR  
'97

To commemorate our official PRCA sponsorship, Colt is offering an original limited edition (1 thru 1000) Colt Single Action Army .45. For details on this direct descendant of the 1873 Colt Peacemaker, call

1-800-962-COLT

AMERICA'S FIRST NAME IN FIREARMS **COLT** SINCE 1836





Genuine precision-made Colt replacement parts.  
For more information call

(888) COLT-COM



**C-MORE**  
SYSTEMS  
World Champion Sights



Magnetic  
Bore Sighter





Every Colt Optic by C-More Systems is designed to maximize the sighting/shooting performance of each designated firearm. Classic AR Scopes totally new and reengineered with brilliant light gathering lenses. Handgun Scopes designed tough to survive the recoil and abuse of the hottest loaded handgun calibers. Rugged Tactical Riflescopes engineered for demanding applications. Compact Scopes with the widest zoom ratio of any variable power scopes at 5:1. Lightweight and compact Armored Spotting Scopes. Premium Sniper Scope precision CNC machined to exacting tolerances. Tactical Elite premium model with oversized windage and elevation adjustment knobs resettable for zero. And, the Target model, a versatile performer loaded with features. For specific details on Colt Optics by C-More Systems, call

( 8 8 8 ) C O L T - O P T

AMERICA'S FIRST NAME IN FIREARMS COLT SINCE 1836



Colt Scout Sight



421 Range-Finding Illuminated Reticle Scope



1-5 X 20 Ring And Dot Illuminated Reticle Scope



**SIGNATURE  
SERIES '97**

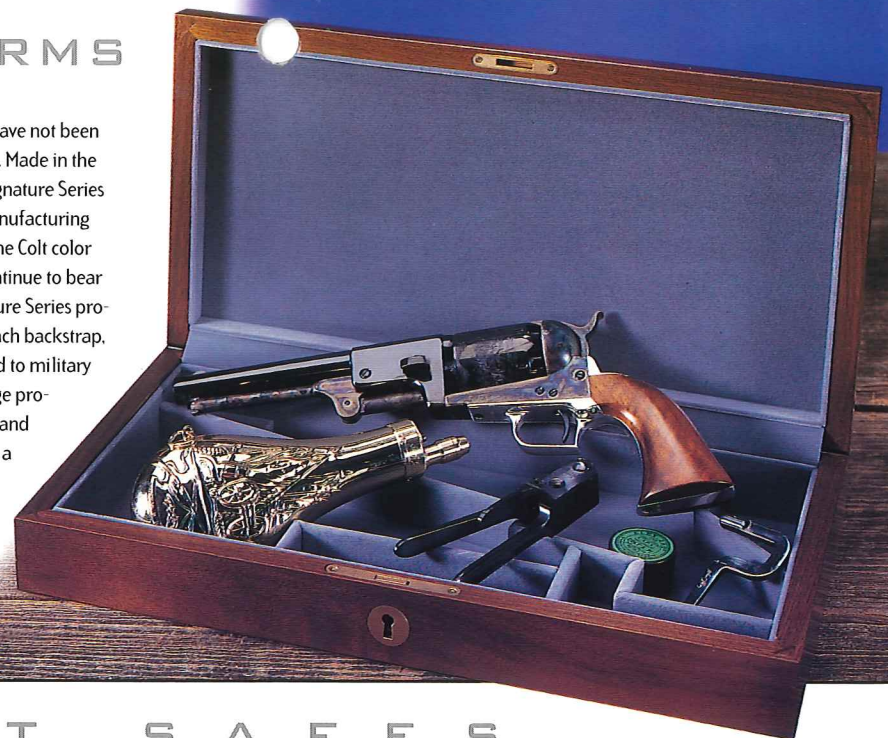


# BLACK POWDER ARMS

A one time, very limited production of both 2nd generation (guns that have not been produced since their original manufacture) and 3rd generation models. Made in the same designs and specifications used by Colt® in the original issue, the Signature Series combines the heritage of the past with the improved metallurgy and manufacturing technologies of today. All revolvers feature the lustrous bluing and genuine Colt color case hardening of their famous forerunners. Each model will continue to bear serial numbers following those used on earlier issues. The Signature Series production is distinguished by Samuel Colt's signature engraved in each backstrap, in honor of his tradition of inscribing those revolvers he presented to military officials, dignitaries and influential people of his time. The average production run is only 2,500 units per model, enhancing their value and making the purchase of one of these prestigious Colt collectables a sound investment.

For more information about Colt Black Powder Arms, call:

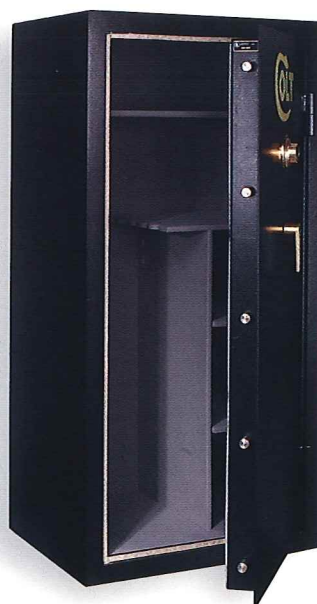
**(718) 499-4678**



**YOU CAN COUNT ON  
COLT QUALITY**

- Security - meet rigid UL Security Standards for gun safes; three anchoring holes provided.
- Fire protection - six-sided double 10 ga. wall fire insulation is UL listed at 1200° F for 1 hour.
- The Colt door - 1/4" thick solid steel; 1" diameter locking bolts; drill deflector bar; 1/2" thick, heat-treated lock mount plate; door length dead locking bar.
- Warranty protection - lifetime free repair of any operable component; free repair or replacement for fire or burglary damage.
- 13 models to choose from.
- 15 different gun capacity and shelf combinations

# COLT SAFES

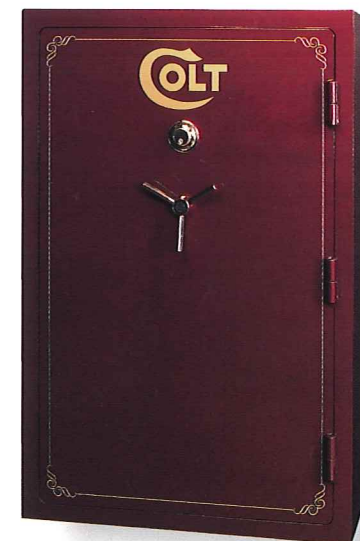


**THE RANGER SERIES:** Essential features; the same burglary and fire resistant features at a more economical price. COLORS: Black matte paint finish. NOS.: 9, 19, 29, 49 and 79.



**THE COLT SERIES:** Full features; the most outstanding value available. COLORS: Black, pearl, autumnwood, burgundy, blue and emerald high-gloss finish. NOS.: 12, 18, 24, 40 and 72

SAFE MODEL	Nos. 9 & 12
H X W X D	30" x 24" x 18"
SHIPPING WEIGHT	300 lbs.
SAFE MODEL	Nos. 18 & 19
H X W X D	60" x 24" x 18"
SHIPPING WEIGHT	525 lbs.
SAFE MODEL	Nos. 24, 26 & 29
H X W X D	60" x 30" x 24"
SHIPPING WEIGHT	625 lbs.
SAFE MODEL	Nos. 40, 46 & 49
H X W X D	60" x 40" x 27"
SHIPPING WEIGHT	940 lbs.
SAFE MODEL	Nos. 72, 76 & 79
H X W X D	72" x 40" x 27"
SHIPPING WEIGHT	1190 lbs.



**THE TREASURY SERIES:** Ultimate features; the standard by which all other safes are measured. COLORS: Black, pearl, autumnwood, burgundy, blue and emerald high-gloss finish. NOS.: 26, 46 and 76

For complete product and ordering information, call

**(817) 561-9095**



**ACP** - Designation for a cartridge originally designed specifically for an Automatic Colt Pistol, usually directly for designer John M. Browning.

**AUTOMATIC** - Originally used as a term applied to firearms with cartridges held in the grip frame, which after a live round is charged in the chamber will fire and reload each time the trigger is pulled. Now used to define a class of weapons which, with one pull of the trigger, continues to fire successive rounds as long as the trigger is held back and until the ammunition is expended.

**BARREL RIB** - Pioneered by Colt; the ridge of metal running along the top of the barrel primarily for added strength, but also for added weight to minimize barrel flip. May be ventilated (has cutouts) or nonventilated, depending on firearm model.

**CALIBER** - The diameter of a bullet and the bore of a firearm. Usually expressed in hundredths or thousands of an inch and written as a decimal fraction, or in millimeters.

**CAPACITY** - Number of cartridges a firearm will hold.

**CYLINDER** - The turning (revolving) chambered breech of a revolver (hence its name) that holds the cartridges.

**DOUBLE ACTION** - In a revolver, a mechanism by which pulling the trigger automatically rotates the cylinder and cocks and fires the hammer. In a semiautomatic pistol, a mechanism by which pulling the trigger cocks and fires the hammer.

**EJECTOR ROD** - Spring-loaded rod projecting from the front of the cylinder which is depressed to eject the spent cartridges from the cylinder chambers.

**ENHANCED MODEL** - Firearm models that have had specific enhancements made to operating features to give them improved performance characteristics over the original model.

**FINISH** - The final coating on the exterior of the firearm. Standard Colt finishes vary according to firearm models, and include stainless steel, matte stainless steel, teflon and stainless steel, royal blue, blue, matte blue, matte black, hard chrome, blue/color case and nickel.

**FRONT SIGHT** - The front element of a device or system designed to aid the eye in aiming a firearm at an object. Various Colt firearm models feature varying levels of sophistication of standard front sights including: ramp; red ramp; white dot; high profile; and removable. Custom-ordered front sights are available through the Colt Custom Gun Shop.

**GRIP(S)** - The part of the firearm you wrap your trigger-finger hand around to hold the firearm. May also be used to indicate the cover(s) that attaches to the grip to provide a more positive, comfortable holding surface.

**LIGHTWEIGHT (L.W.)** - Colt's introduced an aluminum alloy frame in a lightweight equivalent of the Detective Special in 1950. Now, several models of pistols use an aluminum alloy frame to minimize the weight, thus being designated as Lightweight (L.W.) models.

**LOCKED BREECH** - The part at the rear of the barrel that provides positive alignment of the the bullet as it passes from the chamber to the barrel after firing.

**LONG COLT** - A specially designed .45 caliber bullet designed for the Colt Single Action Army.

**LONG MAGAZINE** - The flat metal spring-loaded container into which bullets are loaded, and in turn is inserted into the chamber of a firearm to feed the bullets into the barrel as each preceding round is fired.

**MODEL 1911 .45** - The Colt model of .45 caliber automatic pistol which incorporated patented classic design features that established the standards by which most full-frame automatic pistols are still manufactured today.

**PISTOL** - A firearm with the chamber integral with the barrel; Colt firearms with the chamber in the grip into which a magazine holding the bullets is inserted through the butt.

**REAR SIGHT** - The rear element of a device or system designed to aid the eye in aiming a firearm at an object. Various Colt firearm models feature varying levels of sophistication of standard fixed or adjustable rear sights including: fixed; white dot fixed; adjustable; white outline adjustable; Colt Accro® adjustable; and Colt Eliason® adjustable. Custom-ordered rear sights are available through the Colt Custom Gun Shop.

**RECOIL** - The kickback of a firearm caused by the firing of the bullet.

**REVOLVER** - A firearm with a revolving cylinder of several chambers which employs Sam Colt's original patented design using the cocking of the hammer to rotate the cylinder to bring the successive chambers in line with the barrel, and discharge the round in the chamber with the same hammer.

**RIFLING TWIST** - A system of spiral grooves in the surface of the bore of a firearm causing the bullet to rotate about its longer axis when fired; the more twists per inch, the greater the rotation, creating the opportunity for increased stability.

**ROUND** - Frequently used to refer to, or as another name for, a bullet; a unit of ammunition consisting of the parts necessary to fire one shot.

**SAFETY** - A device designed to prevent accidental firing of the firearm. Give careful consideration to all safety systems before purchasing a firearm.

**SEMI-AUTOMATIC** - A firearm that uses gas pressure or mechanical spring recoil action to eject the spent cartridge from the chamber after each shot, and bring the next round from the magazine into the chamber ready to be fired after the trigger is released and pulled again. Only one shot can be fired with each trigger pull.

**SIGHT RADIUS** - The distance between the sighting point on the rear sight and the sighting point on the front sight.

**SINGLE ACTION** - Hand cocking is required to position the next bullet in the chamber, ready to be fired through the barrel when the trigger is pulled. This is typically done by pulling back the hammer on a revolver, or actuating the slide on a semiautomatic pistol or rifle to chamber the first round from the magazine.

**TRIGGER** - The part of the action moved by the finger to fire the firearm. Depending on the model, Colt firearms feature a variety of triggers to provide the type most compatible to the primary use of the firearm. Types included are: smooth; smooth combat; serrated; service serrated; target serrated; serrated with adjustable stop; skeletonized; and nylon with overtravel stop. Custom-ordered triggers are available through the Colt Custom Gun Shop.

## FIRST-TIME BUYERS GUIDE

Buying your first firearm is an important decision. Here are a few tips and terminologies to help make your decision easier, and be sure it's the right decision.

- 1) Explain to your dealer what your primary purpose is for buying a firearm. This will help in narrowing down the logical range of models from which to choose. For example, if your purpose is personal protection, you won't be interested in looking at rifles.
- 2) Familiarize yourself with some of the basic terminology of firearms so you can better understand exactly what your dealer is talking about. For example, know the difference between a revolver and a pistol. A short glossary of some of the more important basic terms is included as a part of this section.
- 3) Don't be intimidated, or embarrassed to ask questions. Guns are the dealer's business, and helping you make the right decision is part of the services offered.
- 4) Make sure the dealer visually checks the weapon to be sure it is not loaded before letting you handle it. Always do the same before handing a weapon to anyone else.
- 5) Within the parameters of your intended use(s), likes and dislikes are a matter of personal preferences. Take the opportunity to pick up each gun and see how it feels. Does it fit your hand? Is the grip too big around or too short? Does your finger comfortably reach the trigger? Is it comfortable for you to handle?
- 6) Be sure to ask about, and understand, the safety features built into the firearm and described in the manual.
- 7) Find out where you can participate in an approved gun handling and training course conducted by a qualified instructor.





AMERICA'S FIRST NAME IN FIREARMS SINCE 1836

COLT'S MANUFACTURING COMPANY, INC.

Hartford, Connecticut 06144-1868

(800) 962-COLT

NEW  
FOR  
'97

### COLT® LIFETIME SERVICE AGREEMENT

Colt will repair or replace any unserviceable part (s) of your Colt firearm, which in Colt's opinion, is due to a defect in material or workmanship, for as long as you, the original consumer purchaser, own your Colt firearm. Full details are included with each firearm.

Colt's reserves the right to add or delete product models offered, or change product specifications without notice.

Photos are for illustrative purposes only. Actual guns may vary slightly from those pictured in this catalog.

**WARNING:** Never chamber a round until ready to shoot. Read and follow manual accompanying each firearm. ♦ Free manuals available on request. ♦ ©1997