



DOWNLOAD FOR FREE
THE GARDENS OF VERSAILLES
APPLICATION!

This app was produced by Château de
Versailles in partnership with Orange

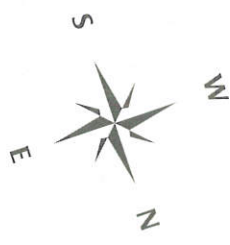


MENAGERIE GATE

GRAND CANAL

LITTLE VENICE GATE

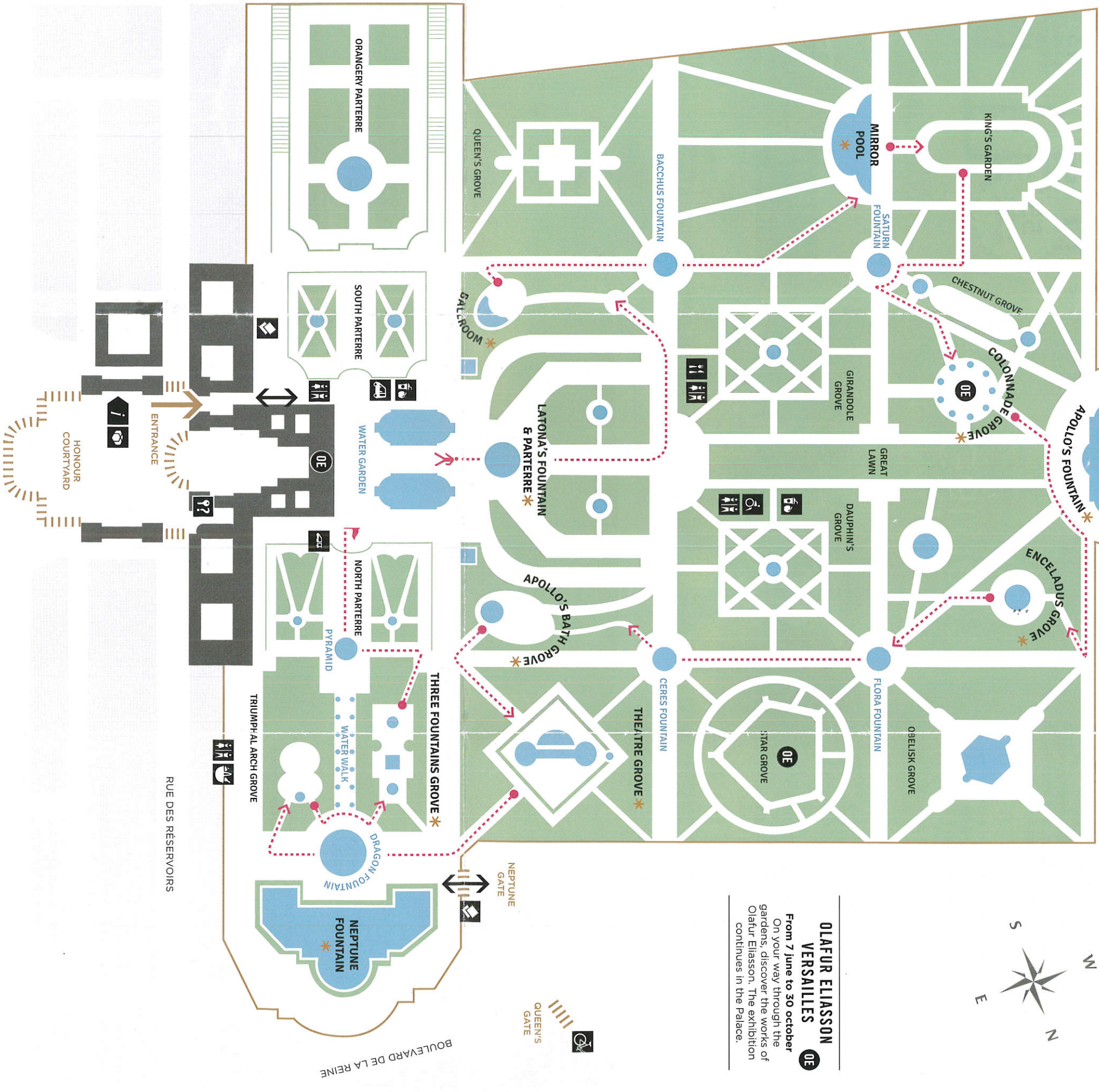
→ Grand and Petit Trianon, Marie-Antoinette's Estate



OLAFUR ELIASSON VERSAILLES

0E

From 7 June to 30 October
On your way through the
gardens, discover the works of
Olafur Eliasson. The exhibition
continues in the Palace.



NOTICE TO VISITORS

Keep your ticket with you
and show it at control points.

No picnics are allowed inside the paying area,
except in the authorised picnic area.
It is forbidden to walk or sit on
lawns or to lean on or touch statues.

The fountains' water is non-drinkable.
Bathing is prohibited.

Please observe instructions
given by hospitality staff.

SUGGESTED WALK



Advised walk

Estimated time: 2h

IN THE GARDENS TODAY

GROVES OPENING
9am to 6:30 pm

MUSICAL DISPLAY
from 10am to 6:30 pm

WATER DISPLAYS
from 10am to 6:30 pm
Every 10 minutes:
Mirror Pool
Every 15 minutes:
Theater Grove

Water display on garden schedules may change.
Please see information at the Garden's entrances or in our website.

GROVES & FOUNTAINS * not to be missed!

Musical fountains show
ticket office

Information
Château de Versailles
ticket office

Entrance / Exit

Free toilets

Facilities for visitors with
reduced mobility

Mini-train:
circuit to Trianon

Electric cars

Lost and found

Restaurants

Snacks

Souvenirs
Book shop

Rowing boats

Bicycle rental

Picnic area

GROVES & FOUNTAINS

not to be missed!

The groves of Versailles were designed during Louis XIV's reign as open air drawing rooms concealed at the heart of the wooded areas of the gardens. One went there for refreshments and light meals, to listen to music or dance. The King could satisfy his taste for gambling and performing arts in these venues intended solely for entertainment and celebrations. Decorated with fountains, vases and statues, accessed through discreet walks, these groves bring surprise and creativity within the Royal Garden.

THE GRAND PERSPECTIVE

A major road link runs from east to west through the entire city of Versailles connecting the royal domain to Paris. Within the park, from the Water Garden to the Grand Canal, passing by Latona's Fountain, the Great Lawn, and Apollo's Fountain, this link designed by André Le Nôtre in the 1660s is called the Grand Perspective.

LATONA'S FOUNTAIN

The statues of this recently restored fountain illustrate the legend of Diana and Apollo's mother protecting her children against the insults of the peasants of Lycia and demanding vengeance from Jupiter who changed them into frogs. Latona's Fountain was built under Louis XIII and modified by Jules Hardouin-Mansart between 1687 and 1689. It is surrounded by the Lizard Pools.

APOLLO'S FOUNTAIN

Apollo's Fountain was dug under Louis XIII; Louis XIV had it decorated with the magnificent group in gilded lead, executed by Tubby, after drawings by Le Brun, representing Apollo on his chariot.

Jean-Baptiste Lully • Versailles, l'île enchantée: Ouverture de Psyché – Chaconne d'Amadis, *Jean-Henry d'Anglebert*: Ouverture de Cadmus – Ouverture le Carnaval – Mascara de **Jean-Philippe Rameau • Dardanus:** Act 1 and 3 (extracts)

BALLROOM

Ballroom was designed and laid out by Le Nôtre between 1680 and 1685 and is the only grove to have survived in its original condition until today. It is decorated with a semi-circular cascade decorated with millstones and seashells brought back from the Indian Ocean and the Red Sea by the Royal Navy.

Jean-Baptiste Lully • Jean-Henry d'Anglebert: Petit Air pour les mesmes, *Versailles, l'île enchantée:* Marche pour la cérémonie des tures – Reprise de la Marche pour la cérémonie des Tures (extracts) **Jean-Philippe Rameau • Dardanus:** Act 1 (extracts) **Unknown • À l'Ombre d'un Ormeau:** La Caroline – Le Sabotier – La Provencelle – Tambourin des Fêtes de Polymnie – La Ramoneuse

MIRROR POOL

Louis XIV commissioned the Mirror Pool in 1702. The Crystal Group shows rhythmic musical fountain displays, to the sound of music by Charpentier and Lully, in the spirit of Le Nôtre, but with the latest technical methods.

Jean-Baptiste Lully • Versailles, l'île enchantée: Reprise de la marche pour la cérémonie des Tures (extracts) *Te Deum Charpentier & Lully:* **Marc-Antoine Charpentier • Te Deum Charpentier & Lully:** Prélude – Te aeternum Patrem – In te, Domine speravi (extracts)

COLONNADE GROVE

With its circular peristyle punctuated by 32 ionic columns, La Colonnade is more of a "mineral" than a "green" grove and was designed by Jules Hardouin-Mansart in 1684.

Jean-Marie Leclair • Scylla et Glauque: Prologue, act 5 (extracts) **Jean-Philippe Rameau • Dardanus:** Act 1 and 3 (extracts)

ENCELADUS GROVE

The grove shows the Titan Enceladus, punished for his pride by the Mount Olympus gods. This composition by Le Nôtre was restored in 1997.

André Campra • Tancredi: Act 4 and 5 (extracts) **Jean-Philippe Rameau • Dardanus:** Act 1 and 2 (extracts)

APOLLO'S BATH GROVE

In 1776, this pre-romantic grove, landscaped by the painter Hubert Robert, was laid out in the fashionable rock sheltering "folly" gardens of the time, with its surprising rock sheltering the three magnificent groups of marble sculptures of Apollo and the Nymphs (recovered from the Thetis Grotto, built by Louis XIV), created by Marsy, Guérin, Girardon and Regnaudin.

THEATRE GROVE

This grove was designed by André Le Nôtre between 1671 and 1674; it was restored in 2015 by the landscape gardener Louis Benech for the contemporary garden and the sculptor Jean-Michel Othoniel for the sculpture-fountains.

NEPTUNE FOUNTAIN

Neptune Fountain was designed and dug out in the shape of a hemicycle as in antique theatres. Armed with his trident, Neptune, the ocean god, sends graceful sprays of water up into the sky.

Musical programme at the Mirror Pool

GROVE OF THE THREE FOUNTAINS

Louis XIV quite probably designed this grove himself, but it was his faithful gardener Le Nôtre who supervised its execution from 1677 to 1679. A simple decor of lawn, marble, rockeries and shells, also remarkable because of the total absence of statues, gives it an elegant and graceful atmosphere.

Pancrace Royer • Pyrrhus: Act 3, 4 and 5 (extracts)



CHÂTEAU DE VERSAILLES SPECTACLES

Until 30 October
VERSAILLES
NOSSAITE RUAFU10

from 9:30 am to 10:30 am
every 15 minutes
Theater Grove
of the Mirror
Pool
Water display
from 6:30 am to 10:30 am
Musical display
from 9:30 am to 6:30 pm
Grove



9102 PAV

SETTIVSSEA EQ UVEATYHC

the Versailles
Fountains
Shows

Musical Fountains Show

Every Saturday and Sunday
from 26 March to 30 October
Every Tuesday from 24 May
to 28 June, Thursday 14 July
From 9am to 6:30 pm

Musical Gardens

Tuesdays from 5 July to 25 October
And Fridays,
from 1st July to 30 September
From 9am to 6:30 pm

The Fountains Night Show

Saturdays
from 18 June to 17 September
From 8:30 pm to 11:05 pm

The Royal Serenade in the Hall of Mirrors

Saturdays
from 18 June to 17 September
5 sessions of 40 minutes
from 6:30 pm to 7:30 pm



The Orangery Nights

Orangery gardens
Prélude: Snow White
15, 16 and 17 June at 9 pm
Louis XIV, The Fire King
Fireworks Show
7, 8, 14 and 15 July at 10 pm

Court Costumes

My first ball at the Orangery
a fancy-dress afternoon for 6-12 year
olds - 25 June at 2:30 pm
The Grand Masked Ball
by Kamel Ouali at the Orangery
of Château de Versailles
25 June from 11:30 pm to dawn

Royal Voices

Royal Opera, Royal Chapel, Trianon
Le Bourgeois Gentilhomme,
Paul McCreesh,
Don Quichotte chez la Duchesse
- Hervé Niquet,
Diego Fasolis, Patricia Petibon,
Jean-Claude Malgoure,
Requiem pour les Funérailles
de Louis XV,
Concert pour Marie-Antoinette
- William Christie,
Nabucco, Il Dilluvio Universale,
Variations, Goldberg - Alexandre
Tharaud, Jordi Savall.

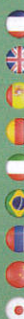
Musical season 2016-2017

Raphaël Pichon, Ballet Prélocaï, Sir John Eliot Gardiner, Haendel: Messiah,
Vivaldi: Four Seasons, Laurence Equilbey, Lully-Molière: Le Bourgeois
Gentilhomme, Cecilia Bartoli, Ravel: Boléro, Philippe Jaroussky, Mozart: Don
Giovanni, William Christie, Jean-Christophe Spinosi, etc.

0033 1 30 83 78 89 • www.chateauversailles-spectacles.fr

INFORMATION - BOOKING

Administrative address:



THE MUSICAL FOUNTAINS SHOW IN FIGURES

25
shows
in 2016

A team of
13
fountain
engineers

600
water
features

55
pools &
fountains

A 35 km
piping system unchanged
since the 17th century

15
groves open
exceptionally

77
hectares of
formal French
gardens

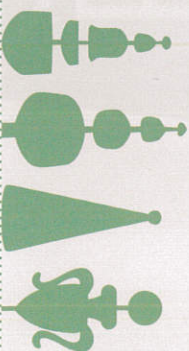
86
sculpted
groups

155
statues

in an
850
hectares
park

235
vases

300 000
flowers planted
each year



THE GROVES FROM THE SKY

View over the Great lawn, the Apollo's fountain, the Grand Canal,
partial view of the Colonnade grove (on the left) and the Enceladus
Grove and the Grove of the Domes (on the right).



THE MUSICAL FOUNTAINS SHOW AT HOME!



CD available in all Château de Versailles shops
or on outhere-music.com
and on boutique-chateauversailles.fr - **From 14€**



Magazine available in french at the ticket office
of the Musical Fountains Show - **6€**

© Toucan Wings

Cover: © J. de Givry